

PROJECTS BY:



SITE ADDRESS :
 aavali signature, Opp. Shreeji Villa, Manilal Party Plot Road, Motera, Ahmedabad.
 booking contact : +91 84888 81099 | +91 72268 12812



AAVALI SIGNATURE

THE MARK OF A TRUE HOME!



*Presenting the Icon Of
Excellence In Abodes.*

Aavli Signature presents a residential project of luxurious apartments in Motera, Ahmedabad, beset with sporting grounds, activity centres, a gymnasium, gaming zones, garden seatings, and lots of greenery!



*Blending Elite with
Environment Harmoniously!*

Aavli Signature blends the best of both worlds – ultra-luxurious facilities, décor and elements with the charm of a soothing and calm atmosphere with green nature!



*Incredible residences
that breathe
life amid luxury!*

Aavli Signature leaves a mark of class and sobriety in its avenue, providing its residents a luxurious life with a calming atmosphere.



*Remarkable Elevation that is
Simple yet Stylish*

Aavli Signature creates a towering structure that is elegant in its exterior and elite in its offerings in more ways than one.



GROUND FLOOR PLAN

1. MAIN ENTRANCE WITH SIGNAGE WALL
2. SECURITY CABIN
3. SEMI-COVERED DROP-OFF PLAZA
4. DRIVEWAY
5. THEME WALL WITH LIGHTS
6. SKATING RINK
7. SENIOR PLAZA WITH BENCHES AND FRAGRANT CREEPERS
8. BOX-CRICKET
9. PLANTERS WITH SCULPTURAL TREES
10. PARTY LAWN ENTRANCE
11. THEME WALL WITH LIGHTS
12. BENCHES
13. PARTY LAWN
14. WATER FEATURE
15. CLUB WALKWAY WITH TRELLIS
16. PATIO WITH FURNITURE
17. GRAVEL COURT WITH SCULPTURAL TREE
18. FRUIT TREES
19. TODDLERS WATER ZONE
20. COURT WITH SWINGS AND FRAGRANT TREES
21. BADMINTON COURT
22. TWO WHEELER PARKING
23. CLUB HOUSE & GYM



N  1ST TO 10TH FLOOR PLAN



18.00 MT. WIDE ROAD

11TH FLOOR PLAN



18.00 MT. WIDE ROAD

12TH FLOOR PLAN



UNIT PLAN TOWER: A1 & B1



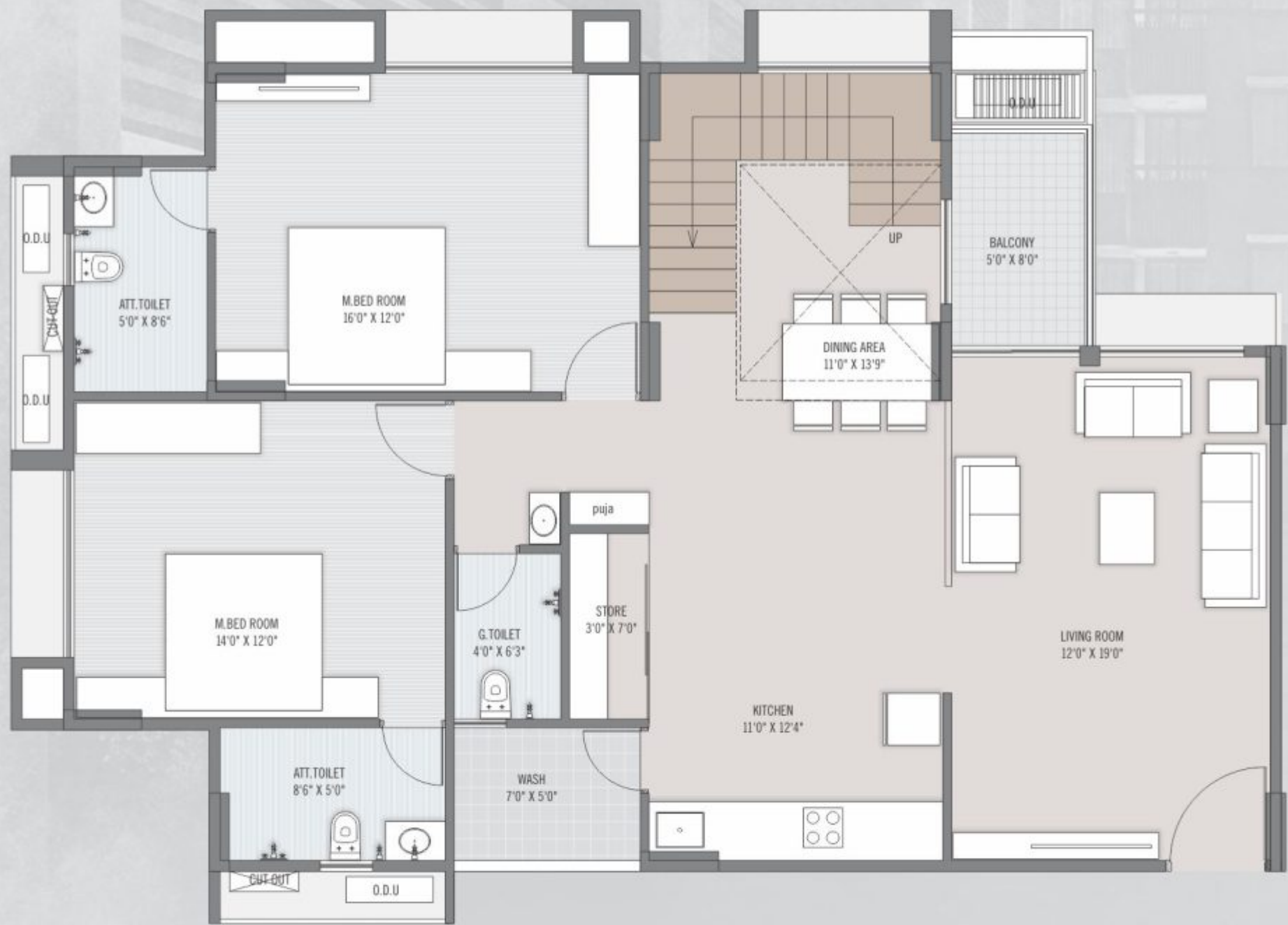
UNIT PLAN TOWER: C1



11TH FLOOR PLAN
TOWER: A1 & B1



12TH FLOOR PLAN
TOWER: A1 & B1



11TH FLOOR PLAN
TOWER: C1



12TH FLOOR PLAN
TOWER: C1



BASEMENT FLOOR PLAN



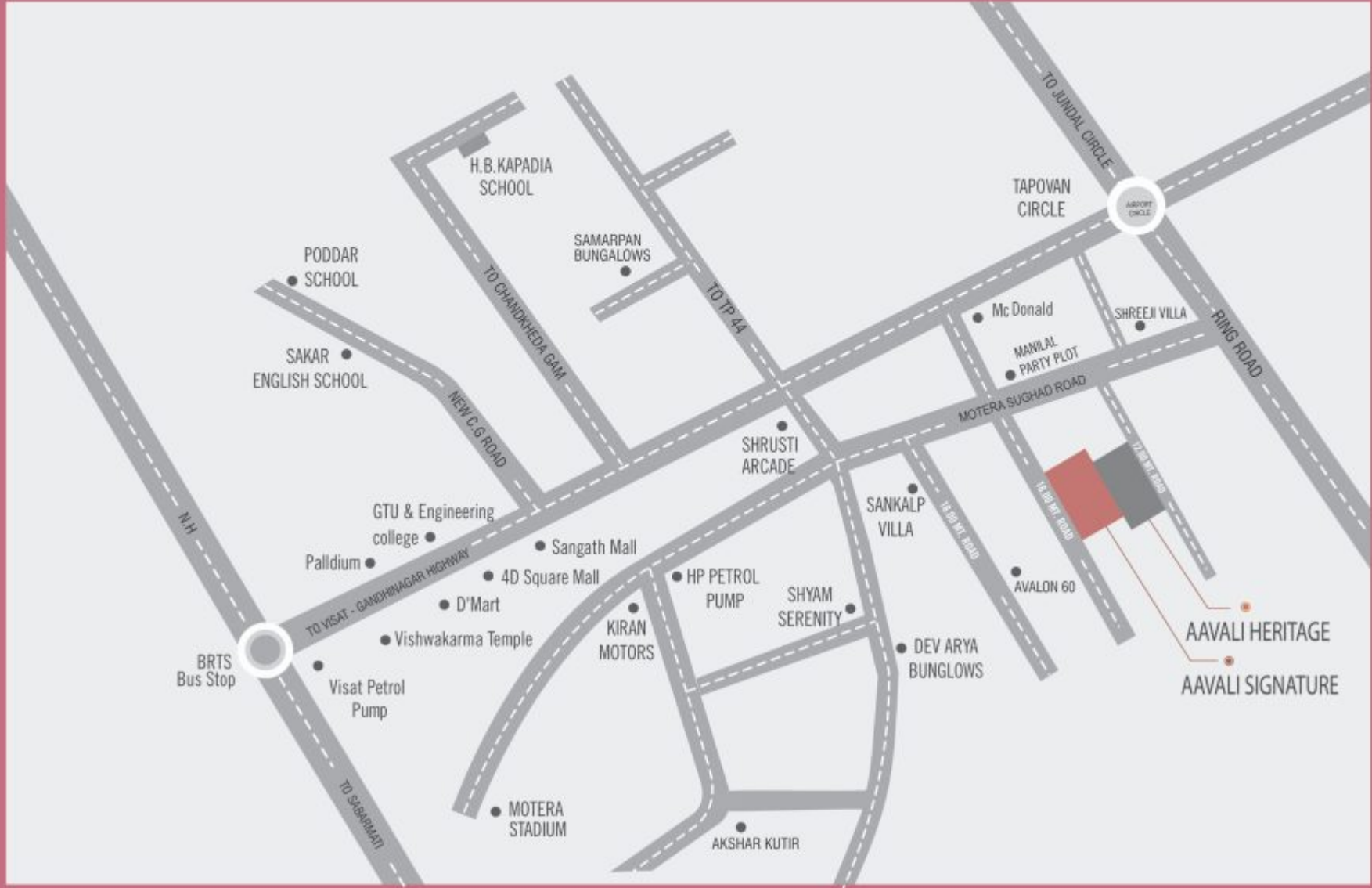




- CENTRAL GARDEN
- SENIOR CITIZEN SEATING
- GYMNASIUM
- 24 X 7 SECURITY
- CCTV CAMERA
- SKATING RING
- BOX CRICKET
- BADMINTON COURT
- BILLIARDS ROOM
- GARDEN SEATING
- KIDS PLAY AREA
- CLUB HOUSE
- INDOOR GAMES ZONE
- GAZEBO
- ATTRACTIVE GATE

Sensational amenities that complete lives...

Aavli Signature includes a host of amenities that seek to provide its residents a holistic lifestyle, in terms of sports, relaxation, entertainment, comfort and security!



SITE ADDRESS : AAVALI SIGNATURE, OPP. SHREEJI VILLA, MANILAL PARTY PLOT ROAD, MOTERA, AHMEDABAD.

SPECIFICATION



STRUCTURE
Earthquake Resistant R.C.C
And Load Bearing.



FLOORING
Unique Premium Quality
Vitrified Tiles In Entire flat
China Mosaic For
Heat Reaction In Terrace.



KITCHEN
Granite Top Platform With
SS Sink. Designer Glazed
Tiles Dado-up To Lintel
Level



TOILET/PLUMBING
Designer Glazed Tiles Up To
Lintel Level.
Premium Quality Bath
Fitting & Sanitary Wares.



ELECTRIFICATION
Concealed Copper Wiring
With Modular Switches &
Sufficient Number Of Point
With MCB Distribution
Panel. AC & Geyser Point.



DOOR & WINDOWS :
Decorative Main Door With
Wooden Frame. All Other
Doors Are Flush Door With
Wooden Frame With Good
Quality Fittings. Powder
Coated Aluminum Sliding
Window With Stone Seal.



WALL FINISH :
Internal Smooth Cement
Plaster With Putty Finish.
External Double Coat Sand
Face Plaster With Good
Quality Acrylic Paint.



Reveling in harmony and redefining grandeur...

With a view to provide a complete life even in the confines of a city, Aavli Signature realized its vision of a grand ambience that lets its residents breathe in tranquility

Specific Notes :

- 1) Commencement and timely execution of the project is subject to all necessary approvals from relevant govt. authorities, occurrence of natural calamities or any other external factors beyond developer's control.
- 2) dimensions shown in the brochure are approximate.
- 3) Developer reserves the right to change, revise or make any modification, addition, omission or alteration in the scheme as a whole or part thereof, at their sole discretion.
- 4) Brochure is only for illustration & private circulation purpose & is not a legal document or a binding one.
- 5) Government levies like stamp Duty, Registration charges, Legal charges, GST and any other additional charges are to be borne by the member.
- 6) Subject to Ahmedabad Jurisdiction.

PROJECT BY :



ARCHITECT :



STRUCTURE ENG :



LANDSCAPE DESIGNER :

